

Voor meer info en advies  
kan u steeds terecht bij

**QUADRALIS**



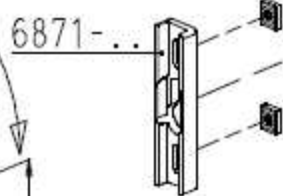
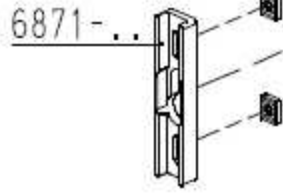
[www.quadralis.be](http://www.quadralis.be)

# Penta-Lock nr. 6774

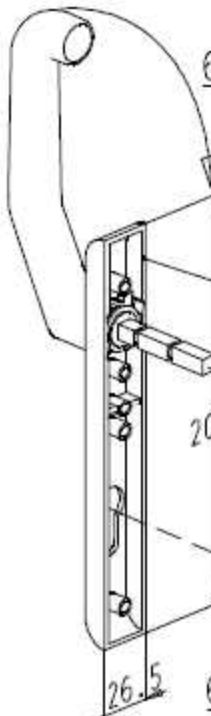
Sluitpunten: 1 haak  
 4 paddestoeltappen  
 Optie: kierstandsliutingen

max. 200 mm  
afkortbaar

6774-U24



824L VI-...



6870-...

Optie: uitvoering 'T'  
met veiligheidspen

Voor meer info en advies  
kan u steeds terecht bij

**QUADRALIS**

[www.quadraxis.be](http://www.quadraxis.be)

824L

880-...

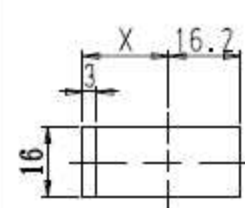
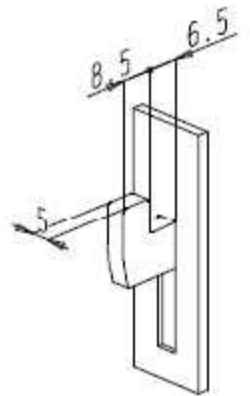
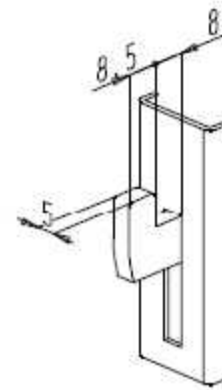
1050

6774-U24A : 2170  
 6774-U24B : 1970  
 6774-U24C : 2370

6871-...

6871-...

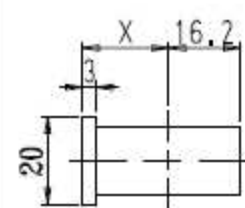
Detail van de  
sluithaak



6774-16A-20

**Doornmaat**

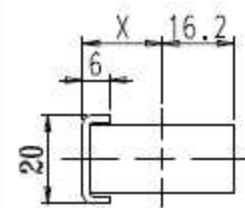
20 → X=19.5  
 30 → X=31



6774-20A-20

**Doornmaat**

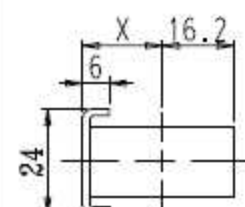
20 → X=19.5  
 30 → X=31



6774-U20A-15

**Doornmaat**

15 → X=18  
 25 → X=29.5



6774-U24A-15

**Doornmaat**

15 → X=18  
 25 → X=29.5

# Penta-Lock nr. 6792

Sluitpunten: 2 paddestoeltappen

